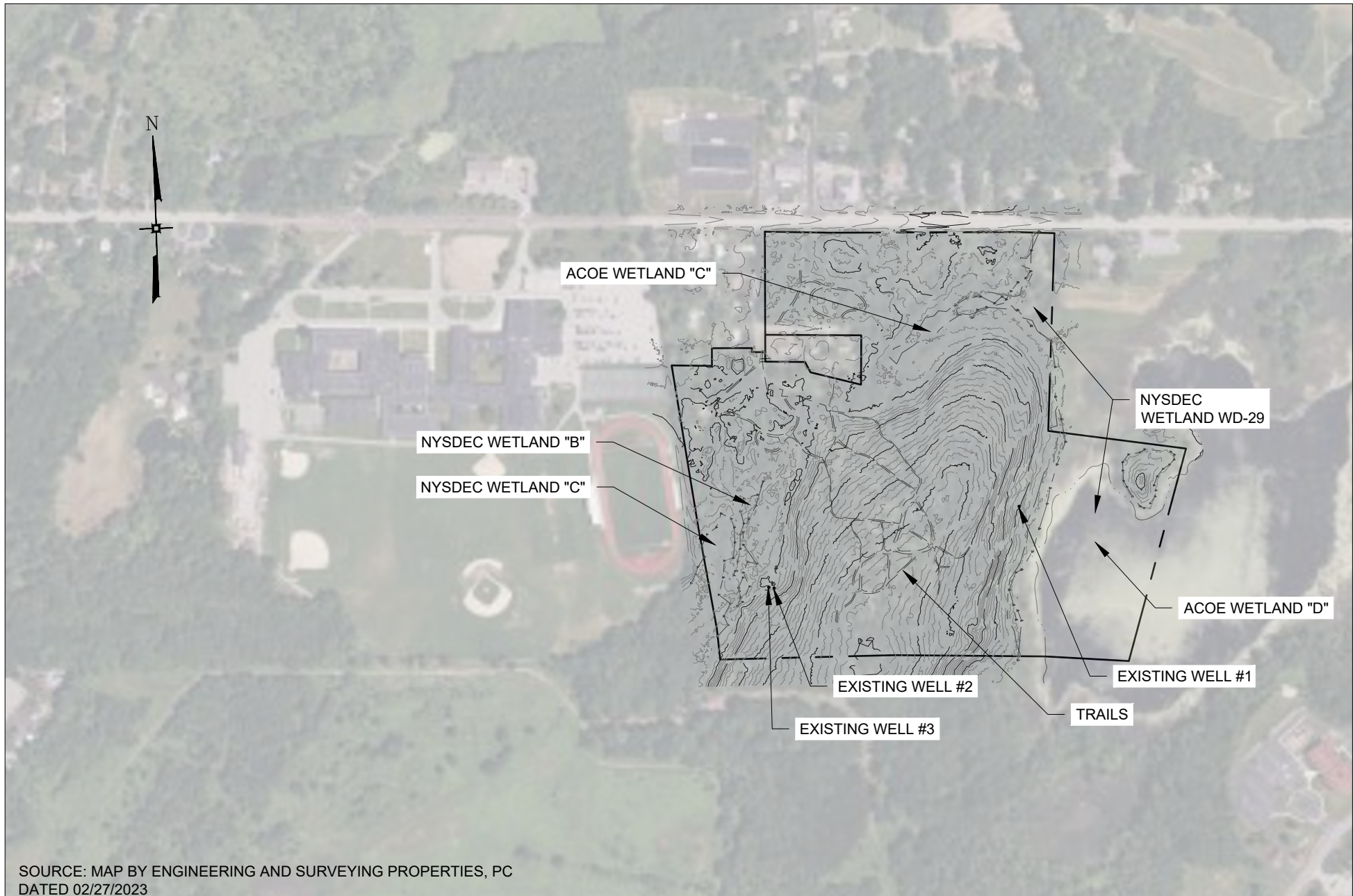



Drawing Name: Z:\103.0301 - Sheffield Apartments\EAF & EIS Figures\103.0301 - EIS Figures.dwg Date Printed: Dec 18, 2025, 2:17pm



EXISTING CONDITIONS MAP	SHEFFIELD APARTMENTS ROUTE 17K TOWN OF MONTGOMERY ORANGE COUNTY, NEW YORK	DATE: 12/15/2023 REV 12/17/2025	JOB # 103.0301	 ENGINEERING & SURVEYING PROPERTIES <small>Achieving Successful Results with Innovative Designs</small>	MONTGOMERY OFFICE 71 CLINTON STREET MONTGOMERY, NY 12549 Ph: (845) 457-7727 WWW.EP-PC.COM
		SCALE: 1"=500'	SHEET # 2.2D		